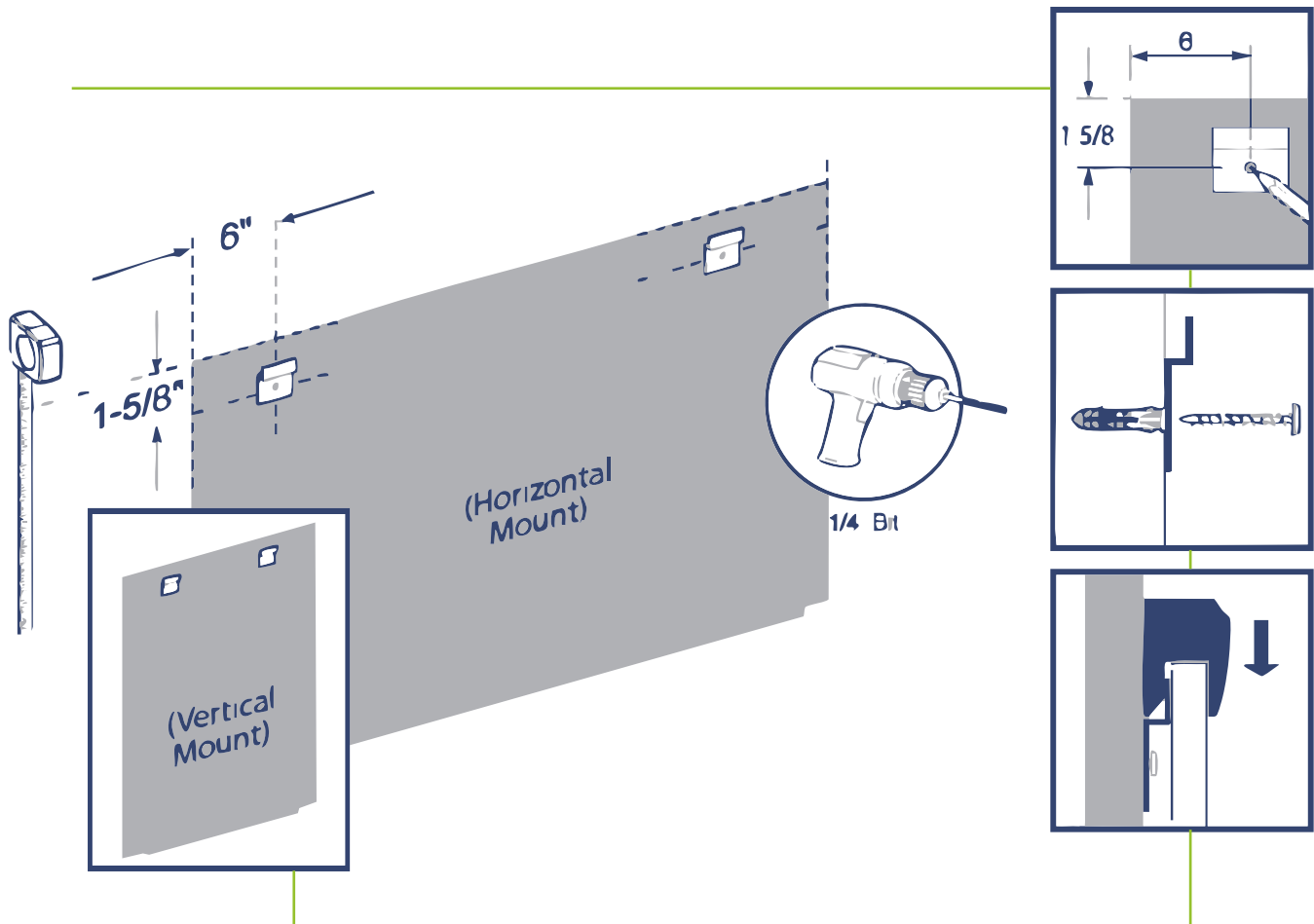




MOUNTING INSTRUCTIONS



2267 VANTAGE STREET
DALLAS, TEXAS 75207

JGXGROUP.COM
214.308.2727

FOLLOW & CONNECT





PLAN
DESIGN
PRODUCE
GRAPHICS
DISPLAYS
FIXTURES

2267 Vantage Street
Dallas, Texas 75207
www.JGXGroup.com

214.308.2727

Table of Contents

CLEAT MOUNT INSTALLATION	Page 1
STANDOFFS MOUNT INSTALLATION	Page 2
Z CLIP MOUNT INSTALLATION	Page 3

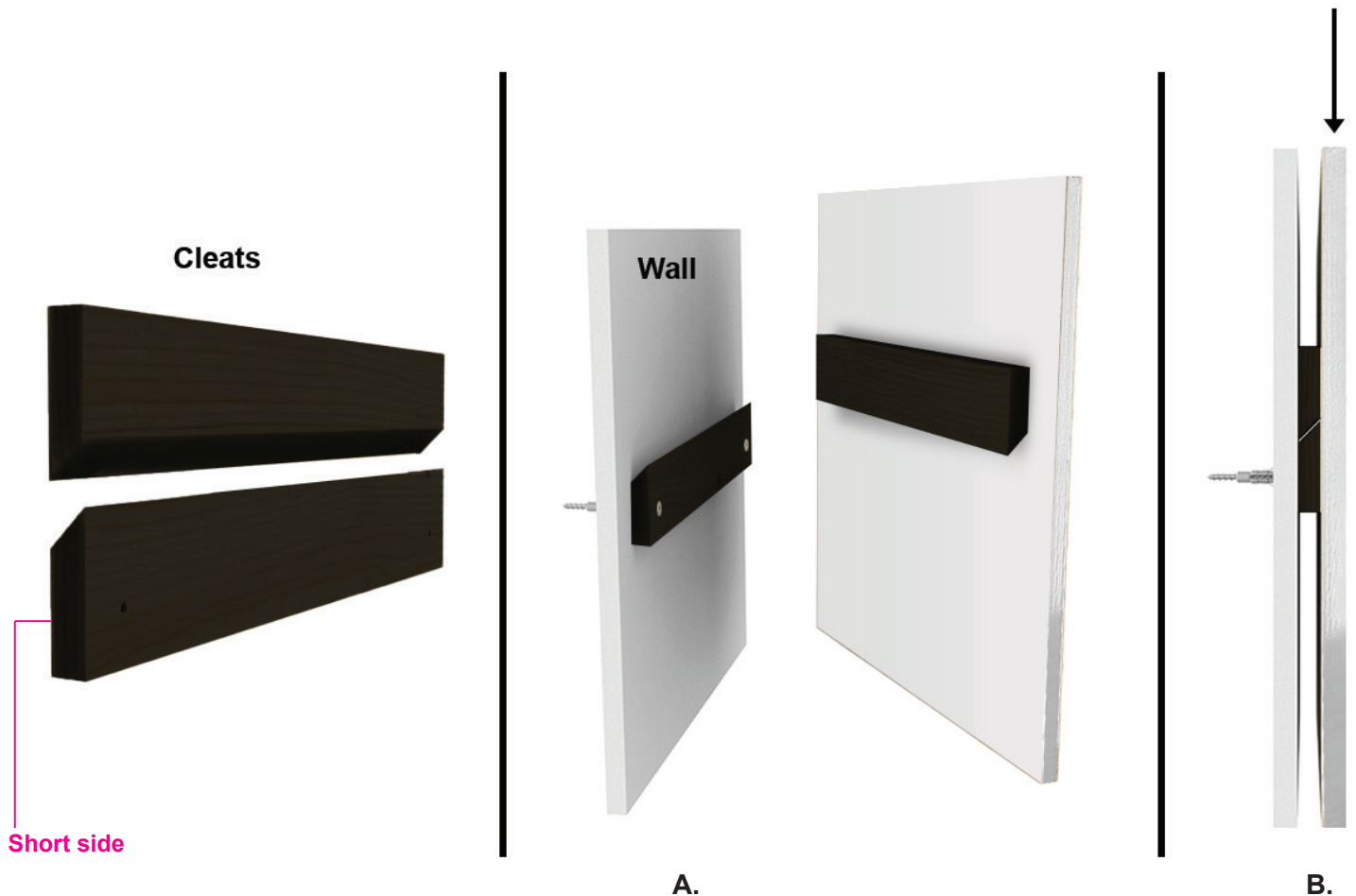


Cleat Mount Installation Instructions

Check Boxes

- A. ☐ One cleat will come already attached to your print. The other cleat will be free. With the **short side** of the free cleat facing the wall, attach the free cleat to your wall with screws, nails, adhesives, etc.
- B. ☐ Once the free cleat is securely attached to your wall, place your print cleat on top of the wall cleat.

*(Larger prints may come with a stabilizer cleat attached to the lower back area to keep print from leaning.)

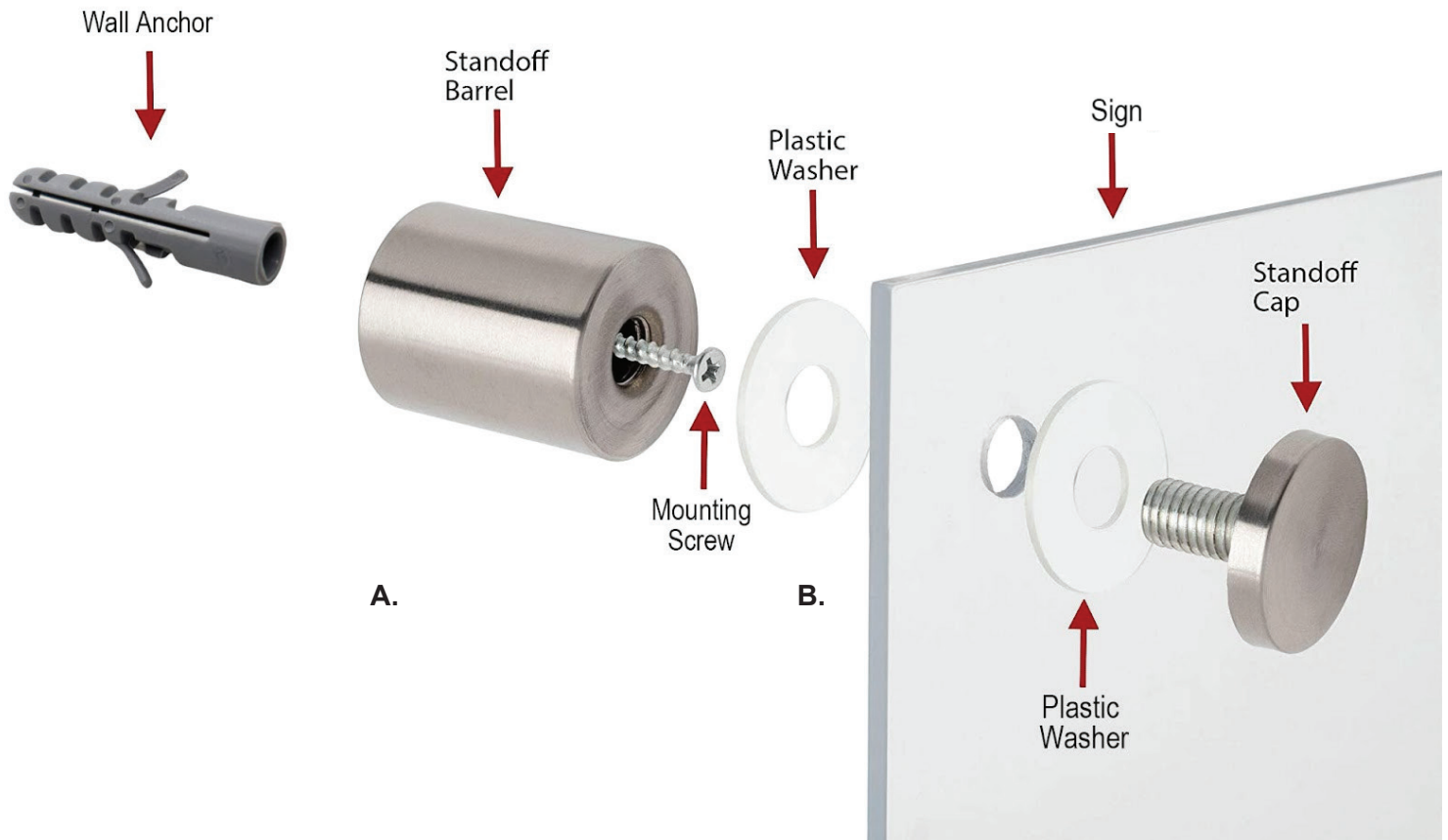


Standoffs Mount Installation Instructions

Check Boxes

- A. ☐ Drill a small hole in your wall and insert the wall anchor. Line up the standoff barrel hole with the wall anchor hole. Screw in the mountain screw until the standoff barrel is flushed securely against the wall.
- B. ☐ Place a plastic washer between the barrel and backside of the sign or print. Place the other plastic washer on the front side of the sign or print. Screw in the standoff cap until it is secured.

*(Some standoffs may not come with plastic washers.)



Z Clip Mount Installation Instructions

Check Boxes

- A. ☐ Your sign or print will be produced with a Z clip already attached to the back unless requested otherwise. A second Z clip will be provided for you to screw into your wall or preferred surface.
- B. ☐ Slide and snap your sign or print Z clip securely into place with the wall Z clip.

*(Z Clips will come in different width sizes depending on the size of your sign or print.)

